

Marine Fuel Filtration

Gasoline Spin-on Series

2

Don't be caught in the water without one of these Racor gasoline spin-on series filters. These filters are designed for high performance applications, and with flow rates between 30 and 120 GPH your engine will perform better than ever with clean, water-free fuel. These filters are coated with a durable electrostatically applied powder coating for superior corrosion resistance. That's the quality you've learned to expect and get only from Racor.

This series features a high capacity Aquabloc® II filter element that removes sediment down to 10 micron and 99% of water. This spin-on filter design is simple to replace and the reusable clear plastic or metal contaminant collection bowls feature a self-venting drain, or metal plug, for removing unwanted muck and water.



120R-RAC-01



120R-RAC-02



320R-RAC-01



320R-RAC-02



490R-RAC-01



660R-RAC-01



660R-RAC-02



3120R-RAC-32



Parker Hannifin Corporation
Racor Division, PO Box 3208
Modesto, CA 95354 USA
Phone: 800.344.3286
Fax: 209.529.3278
E-mail: racor@parker.com
www.parker.com/racor

RACOR®

Marine Fuel Filtration

Gasoline Spin-on Series



Specifications	20R-RAC-0	20R-RAC-02	320R-RAC-0	320R-RAC-02
Application: Inboard Outboard	No Yes	Yes Yes	No Yes	Yes Yes
Max. Flow Rate	30 GPH (114 LPH)	30 GPH (114 LPH)	60 GPH (227 LPH)	60 GPH (227 LPH)
Center Threads	M18 x 1.5	M18 x 1.5	"-14	"-14
Port Size	1/4"-18 NPTF	1/4"-18 NPTF	1/4"-18 NPTF	1/4"-18 NPTF
Number of Ports: Inlets Outlets	2 2	2 2	2	2
Height	6.5 in. (16.5 cm)	6.0 in. (15.2 cm)	9.3 in. (23.6 cm)	9.0 in. (22.8 cm)
Width	3.2 in. (8.1 cm)	3.2 in. (8.1 cm)	4.0 in. (10.2 cm)	4.0 in. (10.2 cm)
Depth	3.2 in. (8.1 cm)	3.2 in. (8.1 cm)	4.0 in. (10.2cm)	4.0 in. (10.2cm)
Weight (dry)	1.1 lb (0.5 kg)	1.1 lb (0.5 kg)	2.0 lb (0.90 kg)	2.0 lb (0.90 kg)
Clean Pressure Drop	0.15 PSI (1.03 kPa)	0.15 PSI (1.03 kPa)	0.61 PSI (4.23 kPa)	0.61 PSI (4.23 kPa)
Max. Pressure	7 PSI (0.5 bar)	7 PSI (0.5 bar)	7 PSI (0.5 bar)	7 PSI (0.5 bar)
Underbowl Clearance	1.0 in. (2.5 cm)	1.0 in. (2.5 cm)	1.0 in. (2.5 cm)	1.0 in. (2.5 cm)
H₂O Removal Efficiency	99%	99%	99%	99%
Operating Temperature	F (-40 C)			

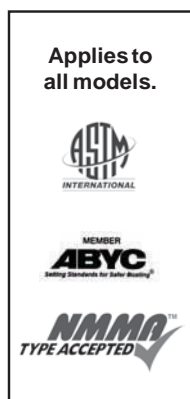
RACOR®

Technical Support:
800.344.3286 ext. 7555
racortech@parker.com

Marine Fuel Filtration

Gasoline Spin-on Series

2



Specifications	490R-RAC-0	660R-RAC-0	660R-RAC-02	3120R-RAC-32
Application: Inboard Outboard	No Yes	No Yes	Yes Yes	Yes Yes
Max. Flow Rate	90 GPH (340 LPH)	90 GPH (340 LPH)	90 GPH (340 LPH)	120 GPH (454 LPH)
Center Threads	"-14	"-14	"-14	"-14
Port Size	3/8"-18 NPTF	3/8"-18 NPTF	3/8"-18 NPTF	1/2"-14 NPTF
Number of Ports: Inlets Outlets	2 2	2 2	2 2	
Height	9.9 in. (25.1 cm)	11.0 in. (27.9 cm)	10.5 in. (26.7 cm)	10.4 in. (26.4 cm)
Width	4.5 in. (11.4 cm)	4.2 in. (10.7 cm)	4.2 in. (10.7 cm)	4.0 in. (10.2 cm)
Depth	4.8 in. (12.1 cm)	4.5 in. (11.4 cm)	4.5 in. (11.4 cm)	5.0 in. (12.7 cm)
Weight (dry)	2.6 lb (1.2 kg)	3.0 lb (1.4 kg)	3.0 lb (1.4 kg)	2.0 lb (0.90 kg)
Clean Pressure Drop	0.95 PSI (6.5 kPa)	0.61 PSI (4.23 kPa)	0.61 PSI (4.23 kPa)	0.15 PSI (1.03 kPa)
Max. Pressure	7 PSI (0.5 bar)	7 PSI (0.5 bar)	7 PSI (0.5 bar)	7 PSI (0.5 bar)
Underbowl Clearance	1.0 in. (2.5 cm)	1.0 in. (2.5 cm)	1.0 in. (2.5 cm)	1.0 in. (2.5 cm)
H₂O Removal Efficiency	99%	99%	99%	99%
Operating Temperature	F (-40 C)			

Marine Fuel Filtration

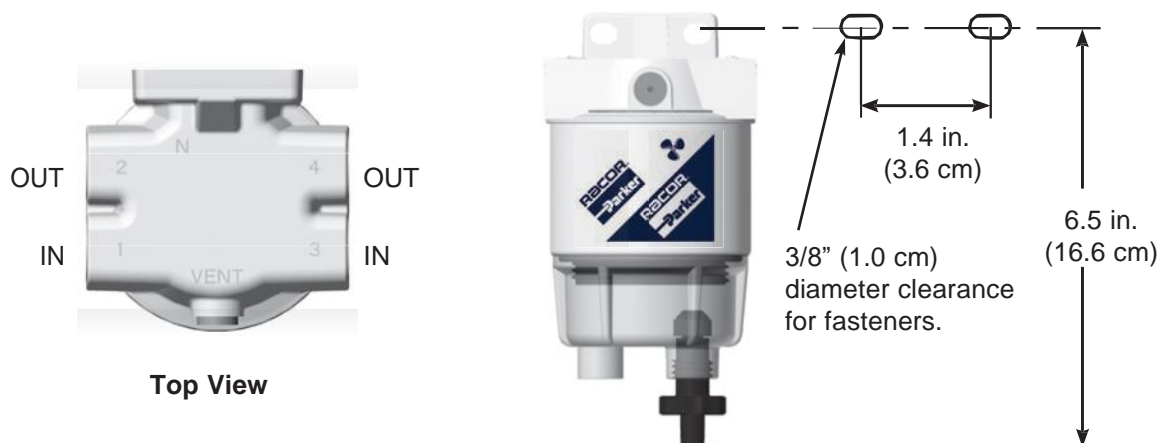
Gasoline Spin-on Series

How to Order

(The example below illustrates how a part number is constructed).

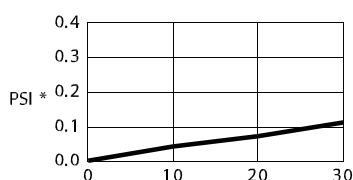
120R-RAC	-01
Basic Model Number	-01 (for clear bowl) -02 (for metal bowl)

Mounting Information

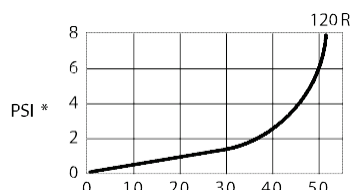


Test Data

(Test results are from controlled laboratory testing. Field results may vary.)



Flow (GPH)
SAE J905 Flow Restriction



Grams
SAE J905 Solid Capacity Test
(using SOFTC-2A; S3240 Element)

PSI x 2.036 = inHg. (PSI x 6.895 = kPa)

RACOR®

Technical Support:
800.344.3286 ext. 7555
racortech@parker.com

Marine Fuel Filtration

Gasoline Spin-on Series

2

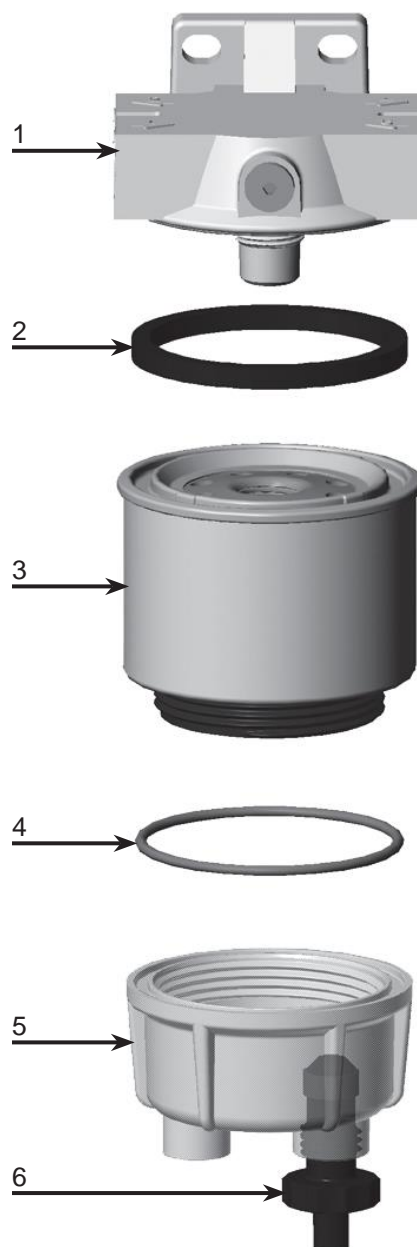
Replacement Parts

120R-RAC-01

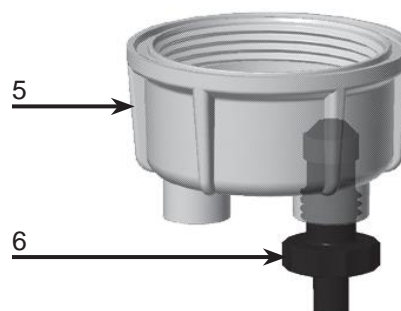
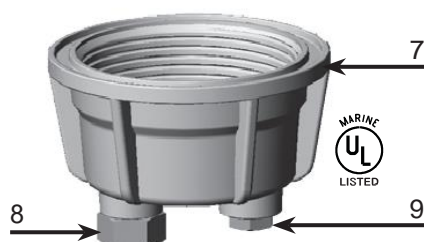
<u>Part Number</u>	<u>Description</u>
1. RK10214-01 10224	Head Kit (includes #2) 3/8" SAE Plug
2. RK10503	Gasket Kit
3. Replacement Element (includes #2) S3240	10 micron
4. RK10012	Bowl O-ring Kit
5. RK10222	Clear Bowl Kit (includes #'s 4 and 6)
6. RK30476	Self-venting Drain Kit
7. 10553	Metal Bowl (includes #'s 4, 6 and 7)
8. 20022	Drain Port Plug
9. 01SP-2S	Probe Port Plug

Additional Parts (not shown)

10223 Installation Instructions



Metal Bowl Kit



Marine Fuel Filtration

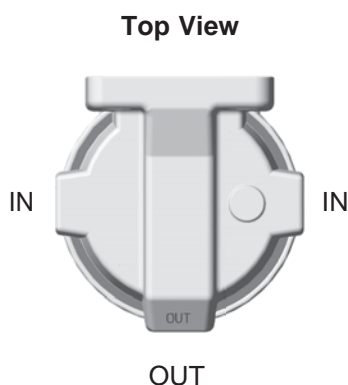
Gasoline Spin-on Series

How to Order

(The example below illustrates how a part number is constructed).

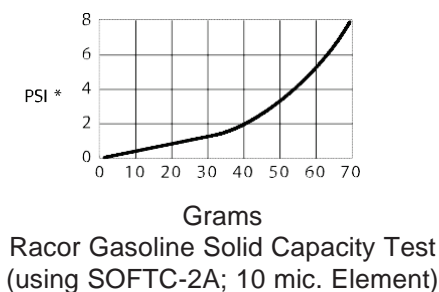
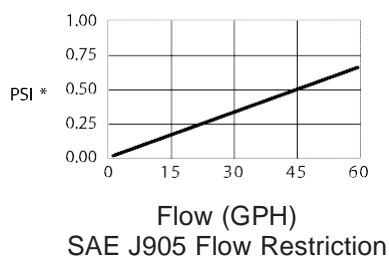
320R-RAC	-01
Basic Model Number	-01 (for clear bowl) -02 (for metal bowl)

Mounting Information



Test Data

(Test results are from controlled laboratory testing. Field results may vary.)



PSI x 2.036 = inHg. (PSI x 6.895 = kPa)

RACOR®

Technical Support:
800.344.3286 ext. 7555
racortech@parker.com

Marine Fuel Filtration

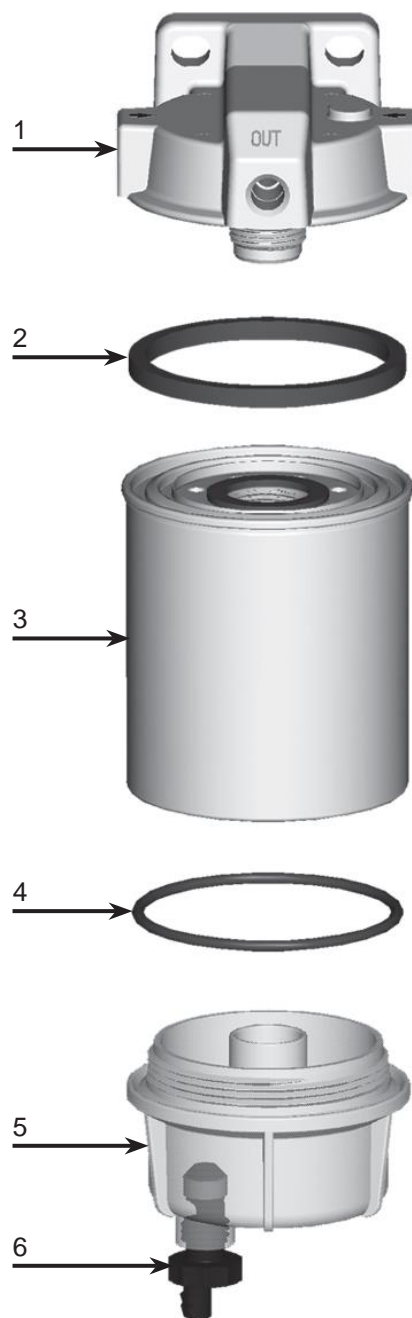
Gasoline Spin-on Series

2

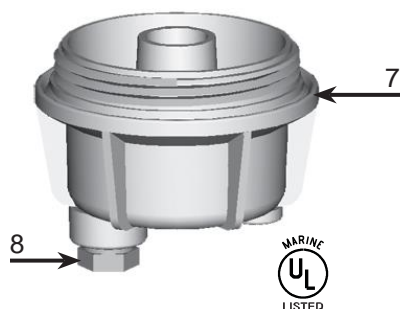
Replacement Parts

320R-RAC-01

<u>Part Nounber</u>	<u>Description</u>
1. RK20180	Mounting Head Kit
2. 20707	Gasket Kit
3. Replacement Elements	
S3227	10 Micron
S3228UL	10 Micron (UL Marine)
4. RK22244	Bowl O-ring Kit
5. RK30475	Clear Bowl Kit
6. RK30476	Self-venting Drain Kit
7. RK30473-02	Metal Bowl Kit
8. 918-N6	Steel Port Plug
Additional Parts (not shown)	
22237	Installation Instructions



Metal Bowl Kit



Marine Fuel Filtration

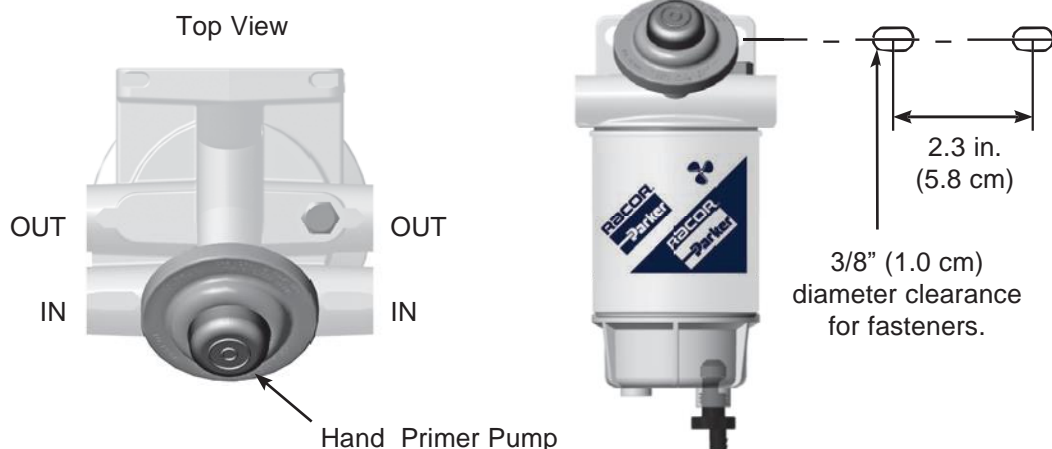
Gasoline Spin-on Series

How to Order

(The example below illustrates how a part number is constructed).

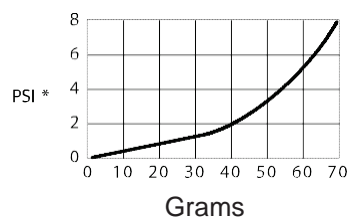
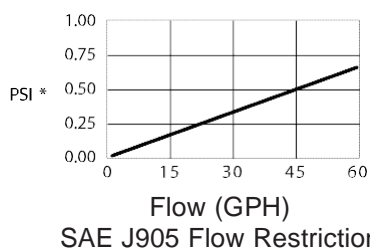
490R-RAC	-01
Basic Model Number	-01 (for clear bowl)

Mounting Information



Test Data

(Test results are from controlled laboratory testing. Field results may vary.)



Racor Gasoline Solid Capacity Test
(using SOFTC-2A; 10 mic. Element)

PSI x 2.036 = inHg. (PSI x 6.895 = kPa)

RACOR®

Technical Support:
800.344.3286 ext. 7555
racortech@parker.com

Marine Fuel Filtration

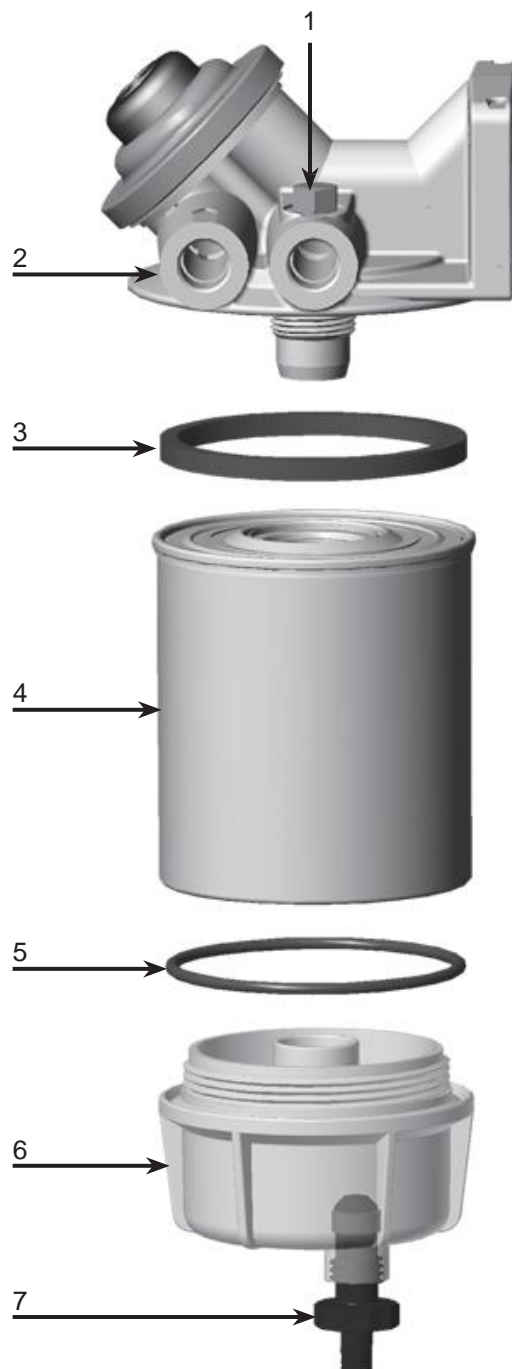
Gasoline Spin-on Series

2

Replacement Parts

490R-RAC-01

Part No.	Description
1. 10110	Vent Plug (3/8" SAE)
2. RK24000	Mounting Head Kit (3/8"-18 NPTF ports) (includes #'s 1-3)
3. 20505	Gasket Kit
4. Replacement Elements (includes #'s 3-5) S3227	10 Micron
5. 30076	Bowl O-ring Kit
6. RK30475	Clear Bowl Kit (includes #'s 5-7)
7. RK30476	Self-venting Drain Kit
Additional Parts (not shown) 14345	Installation Instructions



Marine Fuel Filtration

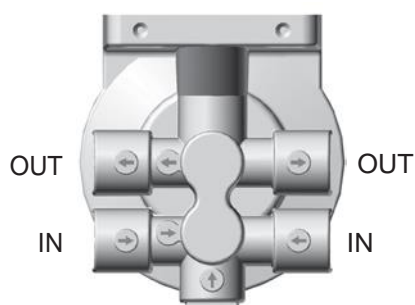
Gasoline Spin-on Series

How to Order

(The example below illustrates how a part number is constructed).

660R-RAC	-01
Basic Model Number	-01 (For Clear Bowl) -02 (For Metal Bowl)

Mounting Information

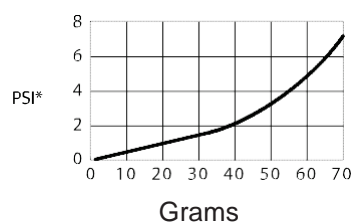
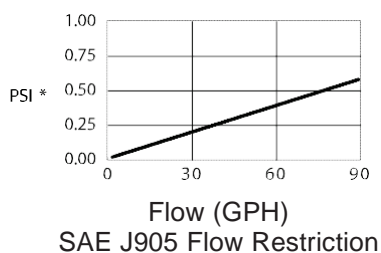


Top View



Test Data

(Test results are from controlled laboratory testing. Field results may vary.)



Racor Gasoline Solid Capacity Test
(using SOFTC-2A; 10 mic. Element)

PSI x 2.036 = inHg. (PSI x 6.895 = kPa)

RACOR®

Technical Support:
800.344.3286 ext. 7555
racortech@parker.com

Marine Fuel Filtration

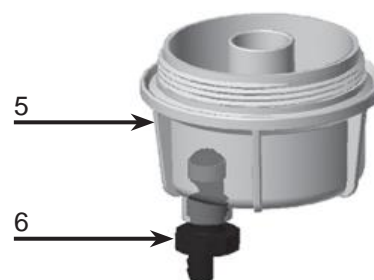
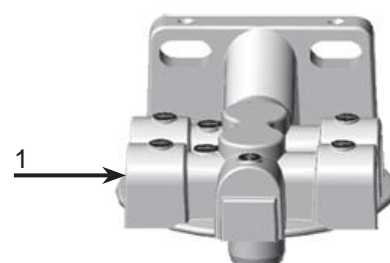
Gasoline Spin-on Series

2

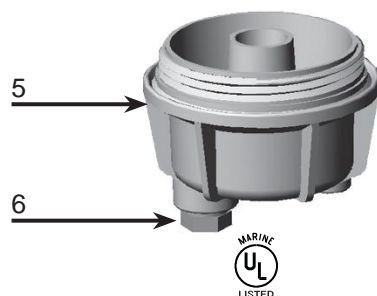
Replacement Parts

660R-RAC-01 and 660R-RAC-02

<u>Part Number</u>	<u>Description</u>
1. RK21411	Mounting Head Kit
2. 20707	Gasket Kit
3. Replacement Elements	
S3232	10 Micron
S3232UL	10 Micron (02)
4. RK22244	Bowl O-ring Kit
5. RK30747	Clear Bowl Kit
RK30473-02	Metal Bowl Kit (02)
6. RK30476	Self-venting Drain Kit
918-N6	Steel Port Plug (02)



Metal Bowl Kit



Marine Fuel Filtration

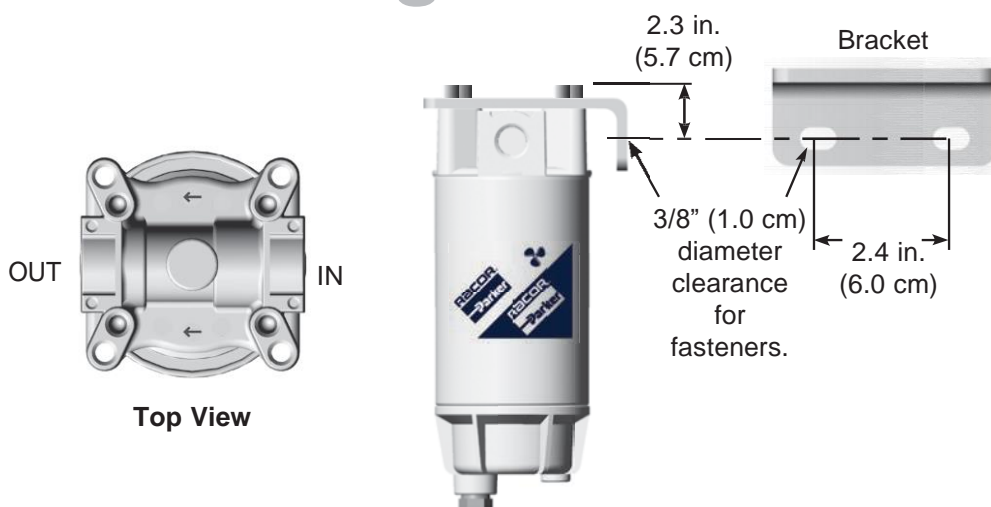
Gasoline Spin-on Series

How to Order

(The example below illustrates how a part number is constructed).

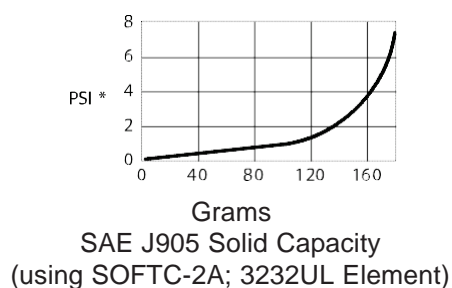
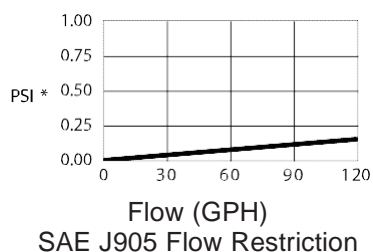
3120R-RAC	-32
Basic Model Number	120 GPH (454 LPH)

Mounting Information



Test Data

(Test results are from controlled laboratory testing. Field results may vary.)



PSI x 2.036 = inHg. (PSI x 6.895 = kPa)

RACOR

Technical Support:
800.344.3286 ext. 7555
racortech@parker.com



Marine Fuel Filtration

Gasoline Spin-on Series

2

Replacement Parts

3120R-RAC-32

<u>Part Number</u>	<u>Description</u>
1. RK21329	Mounting Bracket Kit (includes (4) 3/8"-16x1 fasteners)
2. RK30308-01	Mounting Head Kit (includes #3)
3. 30768	Gasket Kit
4. Replacement Element (includes #3 and 5) S3232UL	10 Micron
5. RK30076	Bowl O-ring Kit
6. RK30473-02	Metal Bowl Kit (includes #'s 5 and 7)
7. 918-N6	Steel Plug, 38" NPT
Additional Parts (not shown) 30941	Installation Instructions

